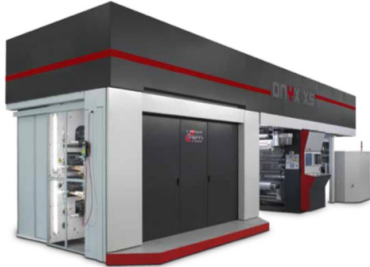




**20<sup>TH</sup>**  
ANNIVERSARY  
**SARELTECH**  
Suppliers to the Printing & Packaging Industry





## Onyx xs

**Compact 8 Colour  
CI Press**

Ideal for Short Print Runs  
**Print Width** 600 – 1000 mm  
**Print Repeat** 240-650 mm  
**Max Speed** 300 m/min



## Onyx Go

**Fastest 8 and 10  
Colour CI Press**

Best for Ultra Short and  
Short Runs  
**Print Width** 820-1020-1320 mm  
**Print Repeat** 260 - 720 mm  
**Max Speed** 400 m/min



## Onyx

**Most Popular Model 6,8  
or 10 Colour CI Press**

Standard machine for all  
material types & Jobs  
**Print Width** 800 – 2400 mm  
**Print Repeat** 350-1250 mm  
**Max Speed** 400 – 500 m/min



## Onyx Race

**Most Sustainable Press for  
Medium to Long Runs**

**Print Width**  
1050,1250,1350,1450,1650 mm  
**Print Repeat**  
320-850mm; 360-1200 mm  
**Max Speed** 600 m/min



## Crystal

**High Speed & Performance  
Model 8 or 10 Colour CI Press**

Higher Spec Machine than Onyx  
for all material types & Jobs  
**Print Width** 800 – 1600 mm  
**Print Repeat** 290-850 mm  
**Max Speed** 500 m/min



## Diamond

**Flagship Model 8 or  
10 Colour CI Press**

High Speed & Production  
**Print Width** 1000 – 2500 mm  
**Print Repeat** 310-2200 mm  
**Max Speed** 600 – 800 m/min

# Rotogravure & Flexo Digital Printing

## Rotogravure Printing



### NEXT 450 - Wide Web Gravure

Peak performance in gravure printing of flexible packaging for short and medium runs.

**Speed 450 m/min**



### NEXT 350 - Wide Web Gravure

A machine designed on the basis of the Next 450 with the aim to maintain high the printing quality but reducing operation costs for each run.

**Speed 350 m/min**



### NXS 300 - Narrow Web Gravure

The NXS 300 is outlined by a modular ultra-compact design, suitable for very short-runs.

**Speed 300 m/min**

## Flexo Digital Printing



### Sapphire EVO

It's the ideal solution for "production digital" related to short and medium runs, promotional printing with reduced production time.

**Speed up to 300 m/min**

**Print width 650 mm**

**Inks Kodak**



### Gaia

Gaia is an adaptable, flexible and easy to use digital inkjet printer, meticulously designed and engineered by Uteco.

**Speed up to 100 m/min**

**Print width 340 mm**

**Inks EB inks**

# Coaters & Laminators



## Mistral

### *Mistral Combi machine for Solvent & Solvent-less Lamination*

- 2 Separate Units for Solvent & Solvent-less Production
- Solvent-less Adhesive unit with separate web path
- Solvent, Water Based or Cold Seal Unit with Trolleys
- 500 m/min speed

## Rainbow 4.0

### *Rainbow 4.0 Solvent-less laminator*

- Fully Automatic Washing System standard for quick job changes less than 10 min
  - Rubber Transfer Sleeve System
  - 500m/min Speed
- Auto Centre unwind. Internal & External job storage
- Sturdy mixer oscillator



## Rainbow EVO

### *Rainbow EVO Solvent-less laminator with Turret Winders*

- Modern Design & Technology
- Washing System standard for quick job changes
- 500m/min Speed



## Horizon 4.0

### *Horizon 4.0 Combi Laminator for Duplex or Triplex Production*

- Machine Modular & customised for any specification as needed
- Rotogravure Units
- Indirect Gravure Units
- Flexo Units
- Production for Wet & Dry Lamination Technologies

## Narrow Web Flexo Plate Mounting Machines:



### Irismall

Camis make a range of narrow web (up to 600mm) plate mounting machines.

For general label printers the Irismall 600 is able to cope with Shaftless Cyclinders (shells), integral cylinders and also sleeve change.

## Wide Web Flexo Plate Mounting Machines:



### SleeveMaster AUTO:

The aim of the SleeveMaster Auto is to deliver to the operator a new tool, that is able to deliver automation without the issues often linked to this kind of technology.

### Irisleeve HD 4.0

The Camis range of sleeve change and cylinder based plate mounters are designed to remove the manual errors that lead to inconsistent registration and print quality.



## Gravimetric & Feeding Systems

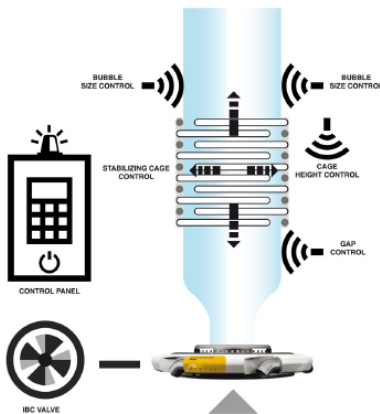


## Automatic Gauge Control



## IBC & Layflat Control

## Loading & Conveying



## Supervision & Data Acquisition



WBox



WIT



PRO - FOXY - SNAP



SLY

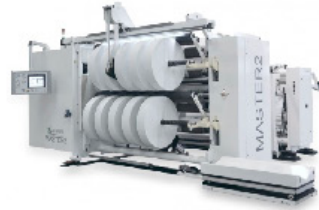
## Slitter Rewinder *Wide-web Slitters*



*WINDER 2*



*AVANCER 2*

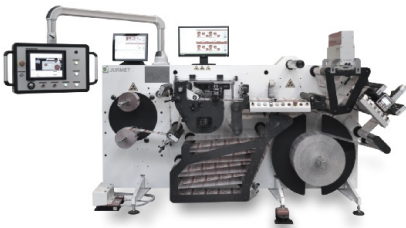


*MASTER 2*



*KRAFTER*

## *Narrow/Mid-web Slitters*



*LANGER 3*



*WINDER-d*



*LANGER-d*

## Core Cutters



*CATER-A*



*CATER-d*



*CATER-S*



*CATER-M*

# Web Video Inspection Systems



**Powerscope 5000**

Economic and Compact System  
Standard on most Label Presses  
Manual Traverse & Keypad Control Standard  
Continues Optical Zoom  
1 Chip Digital Camera  
100x75mm Field Of View  
Auto Scan & Position Memory Functions

### Options

Motorised Traverse  
Touch Screen Control



**PROView**

The new mid-level web monitoring system  
Durable Lighting Unit  
Split Screen  
High Efficiency  
Cost-Effective Service

### Software Options

Backlight Strobe  
Snapshot Gallery  
Lacquer Strobe  
Display of Weak Contrasts (Haze Guard)



**IPQ Center - View**

High End Range System for Complete Inspection Tasks  
Photographic Image Quality and Realistic Colour  
Virtual Repeat Function with Easy Navigation  
Operation & Live Image with Smart Gesture Control

### Camera Options

1 Chip Digital Camera 10x Zoom  
1 Chip Digital Camera 16x Zoom  
3 Chip Digital Camera 16 x Zoom

### Software Options

Sample Inspection - Defect Detection  
Bar code Inspection  
Snapchat Gallery

Various Illumination Options Incl UV & Lacquer  
Various Additional Display Sizes Available



## 100% Defect Detection Systems

### Narrow Web



#### TubeScan Digital Strobe

Economic and Compact System  
Complete Repeat Overview  
Simple Setup & Operation  
Counter for Good, Total and Defects  
250m/min Standard 330/430/550/660/850mm Width

##### *Upgrades Options*

TubeScan + Coarse Inspection & Missing Labels  
TubeScan ++ Fine Inspection & Colour  
Hi Speed & Hi Resolution Options  
Repeat Length Monitoring  
UV Option  
Back Light & Backing Bar Options  
Print Report  
Dynamic Roll Map  
Snapshot Recording  
Pdf Validation



#### TubeScan Eagle View

Cost-efficient combination of 100% print control & detail view using Matrix camera system  
Capture & Display of up to 10 images per second  
Synchronization  
250/330/370/430/470/550mm Width

##### *Upgrade Options*

Digital strobe for web viewing  
UV-Illumination  
Snapshot recording  
Combi backing bar  
'clear-to-clear' backing bar  
TubeScan ++ Detection module for fine print  
TubeScan ++ Print report manager  
TubeScan ++ Distance monitoring  
TubeScan ++ Dynamic roll map  
Touch Monitor + HD monitor



#### TubeScan Digital Strobe XL

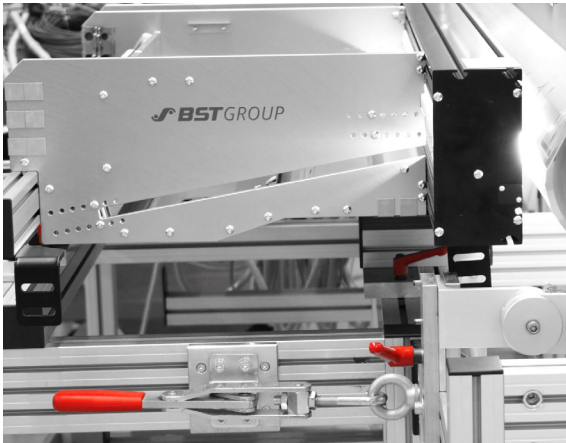
Mid Web 900 - 1700mm  
Converting / Packaging  
Printing and Slitters  
Digital Strobe  
Coarse / Medium defects  
High-speed matrix camera  
Up to 800 m/min  
Economical

# 100% Defect Detection Systems



## Wide Web

### IPQ Center - Check

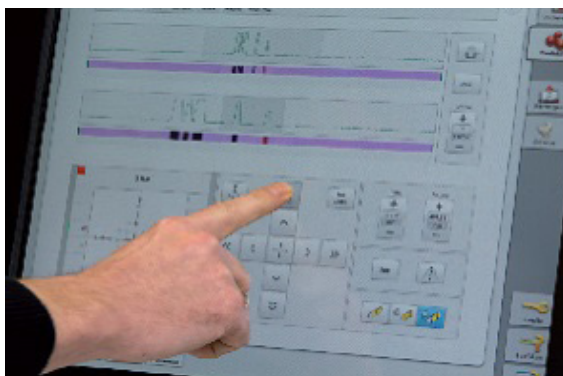


Latest High End System for 100% Defect Detection  
Modular with one Control Center for all Options  
Smallest Compact Housing in Market  
Operation & Live Image with Smart Gesture Control  
Dust Protection and Airconditioning  
LED Backlighting for all Material Types  
RGB Colour Line Scan Cameras  
3 \* 4096 Pixels 85 Mhz Clock Freq  
Brilliant HD Image  
Best Inspection Performance  
Roll Map Display  
Detailed Print Defect View  
Detailed Defect History



### IPQ Center - Spectral - Inline Spectral Measurement

Early detection of any colour variations allows fast reaction  
Colour consistency is measured throughout each reel  
Quality proof for your customer  
Protocols as a base for process improvements  
On press measurements as an input for the colour kitchen  
to further close the colour control loop  
Waste reduction during job make ready



### Print Register Control

**Sincon Star**  
Single Unit  
E.G. Insetter Control

**Registar 20**  
Up to 20 Units  
E.G. Gravure Application

**AR 4000**  
Multiple Units  
E.G. Offset

## Controllers

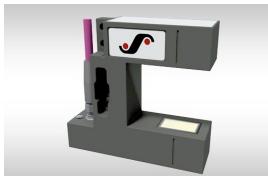


EKR CON 600



ECO: EKR CON 100

## Sensors



Ultrasonic Edge Sensor



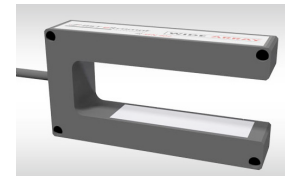
Optical Edge Sensor



CLS PRO 600 Line & Contrast Sensor

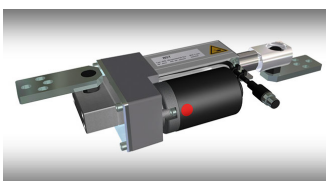


CLS CAM 100

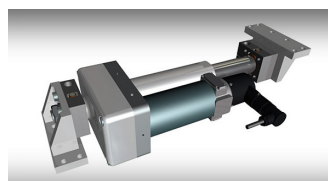


Wide Array Sensor

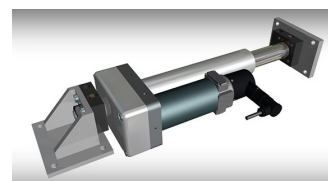
## Actuators



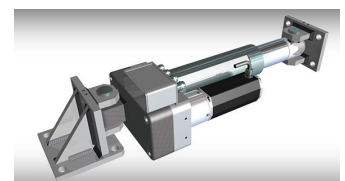
EMS 18



EMS 21



EMS 22



EMS 23

# Anti-Static Techniques

**Anti-Static Ionising Bars**



**Measure and Detect Static**



**Remove and Clean  
Statically Charged Dust**



**Static Generators and  
Charging Systems**



**Static Control Power Units**



**Ionised Air Blowers**



## Corona & Plasma Systems

### Corona Discharge



### Hot Needle Perforation



### Lamination System



### Printing System



The Gama Control System Allows Continuous Monitoring Of The Viscosity Thanks To This While Maintaining Very High Print Quality

**VIS - G20**



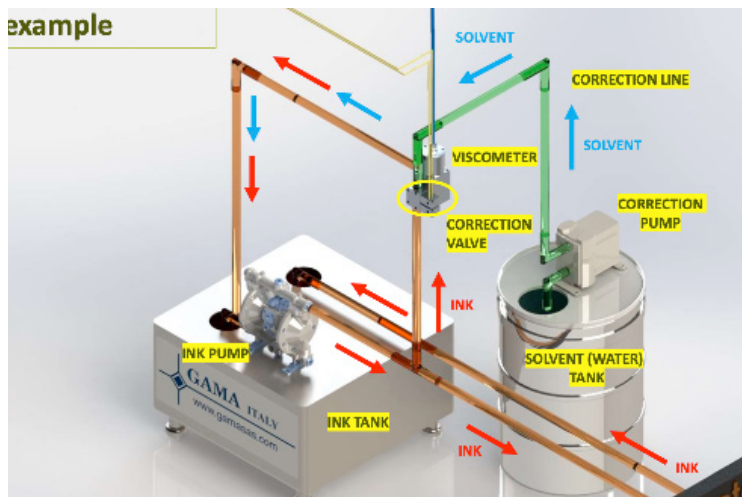
**VIS - G26**



**VIS - G29**



**VIS - G30**



## INKS TREATMENT

### Solvent & Water Based Inks Benefits

- Increase the Quality of Printing Process
- Increase Press Speed
- Save Operator Time
- Consistency Ink Formulas
- Save Solvent (or water) & Ink (- 20/30%)

### Solvent-Based Ink

#### What effects the Viscosity?

- Temperature
- Resin system
- Press Speed
- Agitation
- Printing Time

### Water-Based Ink

#### What effects the Viscosity?

- pH
- Temperature
- Resin system
- Press Speed
- Agitation
- Printing Time





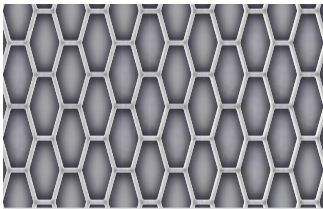
# Anilox Rolls & Sleeves

## Applications



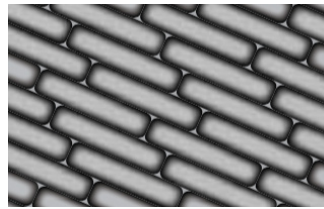
- Applicators (Coating, Laminating)
- Corrugated (Pre- and Post-Print)
- Envelope
- Flexible Packaging
- Folding Carton
- Liquid Carton/Aseptic Packaging
- Metal Decorating
- Newspaper
- Printed Electronics
- Publications
- Single Use (Tissue, Towel, Cups)
- Tag and Label
- Wallcoverings

### Novaline Series - High-Quality Laser Engraving Options Designed To Let Rolls Run Cleaner Longer



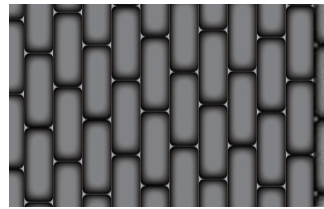
#### Nova UV Gold

Ideal for UV ink application, including aluminum, film and paper packaging



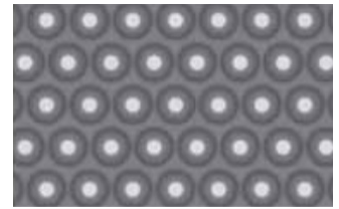
#### Nova Gold

Developed for high-density flexo printing, particularly high-definition flexible, paper and corrugated packaging



#### Nova Silver

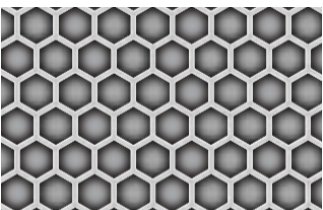
The right choice for solid, process and text high-density printing



#### Nova ART Gold

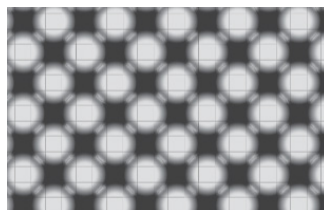
Designed for demanding coating, specialty materials and varnish applications

### Proline Series - Exceptional Coverage And Coating Combines With Fast Cleanup For Better Productivity



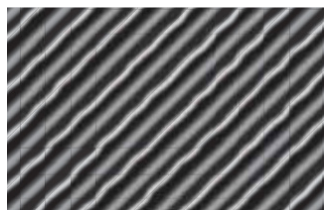
#### Proline 60

Suppresses moire effects and delivers easy ink transfer and uniform cell structure - this is the most popular pattern



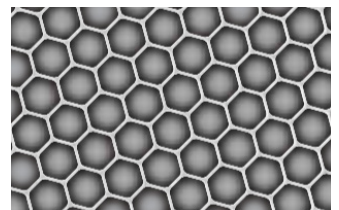
#### Proline ART

Anilox Reverse Technology - designed for flexo printing, offset coating, gravure and laminating applications



#### Proline HEL\*

Open cell structure offers better ink release for gravure and coater applications



#### Proline ISF\*

Minimizes splash of UV inks

# Solvent Distillers & Washing Units



## Solvent Distillers

*Drastically reduce costs for the purchase of new washing solvent and the disposal of exhausted solvent.*

- Low cost and immediately reduces running costs
- Easy to use, thanks to automated cycle control
- Safe for the user, compliant with all applicable regulations
- Eco-friendly: recycling is the key

## Spray Washing Units

*Simple and effective washing solutions to optimise cleaning processes and improve the working conditions of operators in industrial contexts of every type and size.*

- Safe for washing equipment operators
- Saves time which you can invest in more higher level activities
- Produces excellent results faster than before
- Inexpensive, with low running costs



## Ultrasonic Washing Units

*Deep, flawless cleaning in one single washing cycle. Ultrasound washing has the power to remove the most stubborn contaminants but is gentle enough not to damage the components being cleaned.*

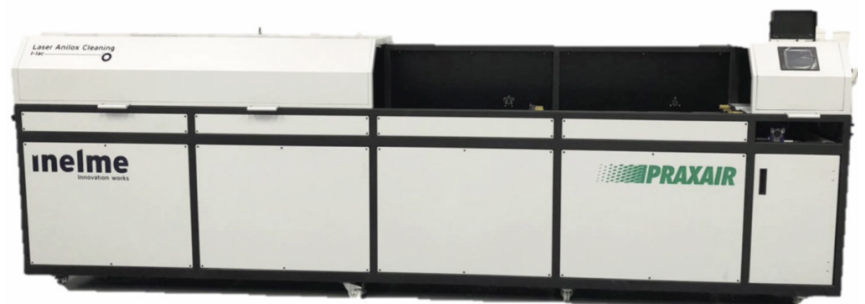
- Guarantees a high quality, deep wash
- Ideal for articulated components and complex parts
- Acts effectively without the use of solvents
- Very low running costs, maintenance free

**inelme**  
Innovation works

## Anilox Cleaner

Inelme is a Spanish company that is present in more than forty countries with hundreds of running machines around the world.

The rollers are inspected, laser cleaned, and certified as per a new anilox. The machine is capable of anilox diameters from **60mm to 250mm** and with a **maximum cleanable facewidth of 2500mm** for a **total roll length of 3500mm** between the journals.



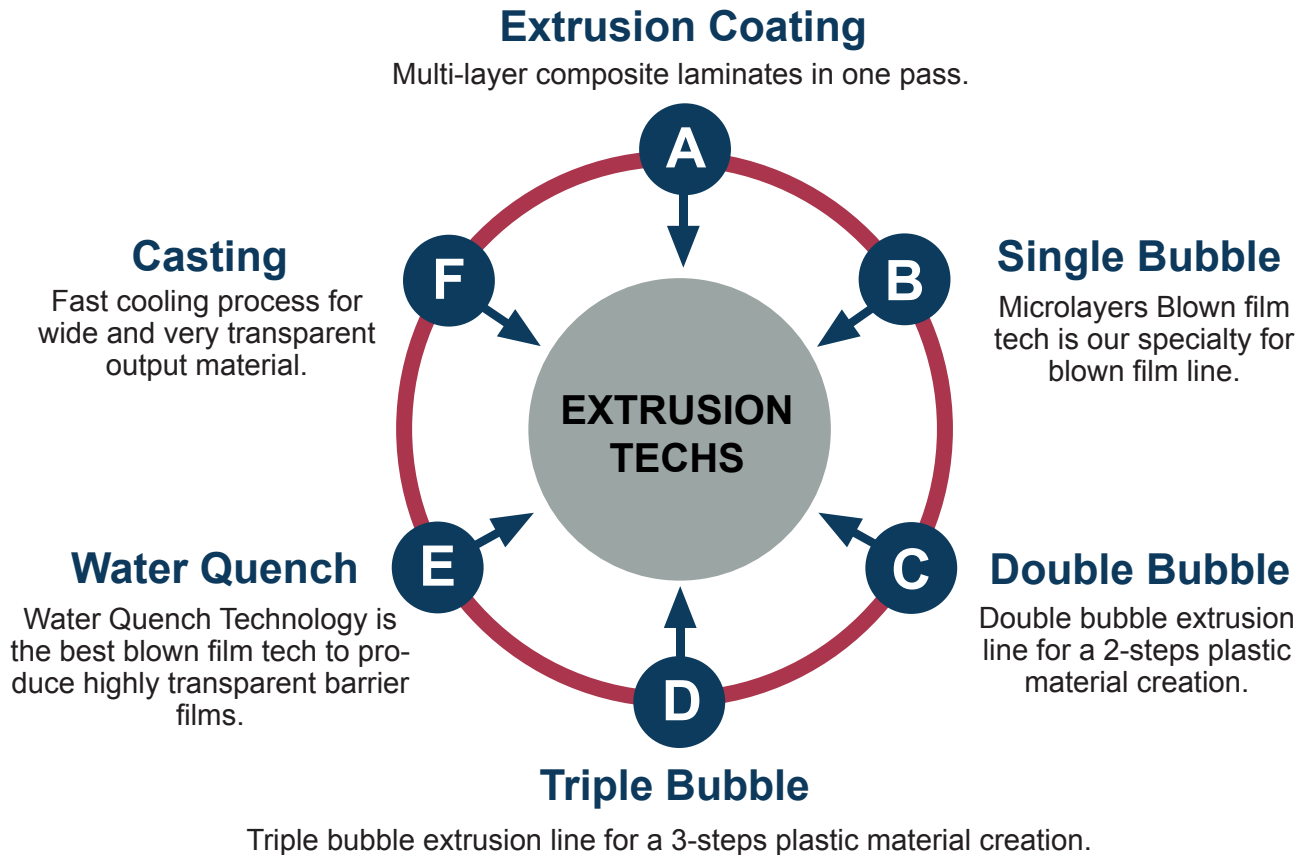


# Specialty Extrusion Technologies



## Product Portfolio

Our machines portfolio satisfies any customer needs through the most advanced technologies in the sector.



## GAP Technologies: PE Crosslink vs MDO PE

MDO (machine-direction orientation) PE can be overcome by Crosslinked.

Driver	MDO PE	Crosslinked PE
<i>Stability during Sealing</i>	Bad - the film shrinks at high sealing temp	<b>Stable</b> up 200 ° C - the film does not shrink
<i>Improved Heat Resistance</i>	Limited Resistance to Heat	<b>High</b> Heat Resistance
<i>Thickness Range</i>	20 Microns	20-400 Microns
<i>Printability</i>	Good (inside printing)	Good (surface printing)
<i>Production Output</i>	Up to 400 Kg/h	Up to 500 Kg/h
<i>Process</i>	Cast or Blown	Blown
<i>Lamination</i>	Requires lamination	<b>NO</b> lamination

# Machine For Paper Bags



*Innovation And Technology, Combined With Easy Use*



## SERIES

Available in series 300 & Series 500 Models

## TECHNOLOGY

Geared or Gearless Train Technology

## HANDLES

Handles are available in a **twisted paper** version or in a **flat paper** version



**SUN MASTER 541** | **SUN MASTER 350** | **SUN MASTER 540 EVO**  
**SUN MASTER 545** | **SUN MASTER 355**



**Sarel Oosthuizen**

**Tel:** +27 21 552 9764

**Cell:** +27 83 229 9497

**Email:** [sarel@sareltech.com](mailto:sarel@sareltech.com)

**Web:** [www.sareltech.com](http://www.sareltech.com)

---

**Ryno Oosthuizen**

**Tel:** +27 21 552 9764

**Cell:** +27 73 180 5884

**Email:** [ryno@sareltech.com](mailto:ryno@sareltech.com)

**Web:** [www.sareltech.com](http://www.sareltech.com)

---