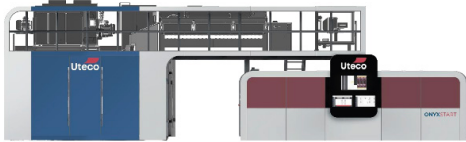




SARELTECH

Suppliers to the Printing & Packaging Industry





Onyx Start

**Cost Effective Performance
In The Onyx Family**

Ideal for Short Print Runs
Print Width 1020 | 1320 mm
Print Repeat 310 - 720 mm
Max Speed 400 m/min



Onyx Go

**Fastest 8 and 10
Colour CI Press**

Best for Ultra Short and
Short Runs
Print Width 820-1020-1320 mm
Print Repeat 260 - 720 mm
Max Speed 400 m/min



Onyx Race

**Most Sustainable Press for
Medium to Long Runs**

Print Width
1050,1250,1350,1450,1650 mm
Print Repeat
320-850mm; 360-1200 mm
Max Speed 600 m/min



Onyx

**Most Popular Model 6,8
or 10 Colour CI Press**

Standard machine for all
material types & Jobs
Print Width 800 - 2400 mm
Print Repeat 350-1250 mm
Max Speed 400 - 500 m/min



Crystal

**High Speed & Performance
Model 8 or 10 Colour CI Press**

Higher Spec Machine than Onyx
for all material types & Jobs
Print Width 800 - 1600 mm
Print Repeat 290-850 mm
Max Speed 500 m/min



Diamond

**Flagship Model 8 or
10 Colour CI Press**

High Speed & Production
Print Width 1000 - 2500 mm
Print Repeat 310-2200 mm
Max Speed 600 - 800 m/min

Rotogravure & Flexo Digital Printing

Rotogravure Printing



NEXT 450 - **Wide Web Gravure**

Peak performance in gravure printing of flexible packaging for short and medium runs.

Speed 450 m/min



NEXT 350 - **Wide Web Gravure**

A machine designed on the basis of the Next 450 with the aim to maintain high the printing quality but reducing operation costs for each run.

Speed 350 m/min



NXS 300 - **Narrow Web Gravure**

The NXS 300 is outlined by a modular ultra-compact design, suitable for very short-runs.

Flexo Digital Printing



OnyxOMNIA

The First FlexoDigital Printing Press In The Market As Best Fit For Short And Medium Runs.

Max Printing Width - 1320 mm

Print Repeat Range - 350 - 720 mm

Max Printing Speed (Flexo/FlexoDigital or Digital) - 400/300/150 m/min

Max Color Unites (Flexo + Digital) - 10 mits

Film Tension Range - 2 - 40 daN

Max Reel Weight - 1100 Kg

Coaters & Laminators



Rainbow 4.0

Rainbow 4.0 Solvent-less Laminator

- Fully Automatic Washing System standard for quick job changes less than 10 min
- Rubber Transfer Sleeve System
- 500m/min Speed
- Auto Centre unwind. Internal & External job storage
- Sturdy mixer oscillator



PrismaCLG

PrismaCLG Coating & Laminating

- Multiple coating and process types - solvent-based, solventless, and water-based laminating
- All configurations featuring shaftless unwinders and rewinders
- The laminating units is available either with 2 or 3 rollers.
- Max. process speed of 450 m/min and max. material width of 1550mm.



Mistral

Mistral Combi machine for Solvent & Solvent-less Lamination

- 2 Separate Units for Solvent & Solvent-less Production
- Solvent-less Adhesive unit with separate web path
- Solvent, Water Based or Cold Seal Unit with Trolleys
- 500 m/min speed



Rainbow EVO

Rainbow EVO Solvent-less laminator with Turret Winders

- Modern Design & Technology
- Washing System standard for quick job changes
- 500m/min Speed



Horizon 4.0

Horizon 4.0 Combi Laminator for Duplex or Triplex Production

- Machine Modular & customised for any specification as needed
- Rotogravure Units
- Indirect Gravure Units
- Flexo Units
- Production for Wet & Dry Lamination Technologies

The Flex-Converting Alliance



The one Printing and Converting group to cover all of your flexible packaging needs with the widest offering.



Bimec | Slitter Rewinders



CMG - MAM | Single Bubble Extrusion Technologies



GAP | Specialty Extrusion Technologies



Smartjet | Industrial Inkjet Single-Pass Printers



Uteco | Printing, Laminating & Converting Machines



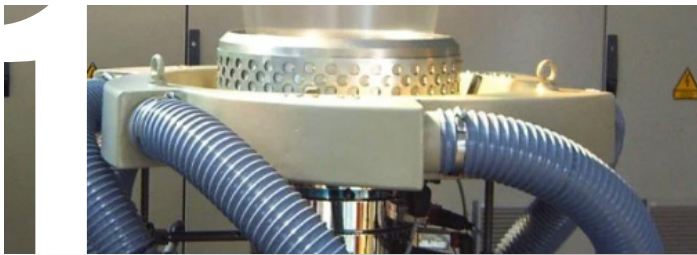
The most extensive and unique range in the converting industry, spanning extrusion, printing, quality control, and slitting.



Blown Film Extrusion

New Solutions In Blown Film Extrusion

What Does CMG Offer?

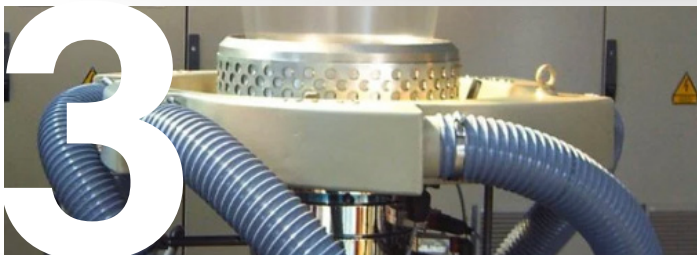


INNOEX

High Performance Three-Layers
Extrusion Lines

OVERFIVE

Complete Five Layers Lines for PA/EVOH
Barrier Film and for Polyolefins Processing



COEXPERT

Compact and Versatile
Coextrusion Three Layers Liners

ROTOCOMPACT

Compact and Versatile
Monoextrusion Lines



CMG Bought A Company Called MAM

What Does MAM Offer?

- » MAM HDPE MONO (MONOEXTRUSION)
- » MAM HDPE COEX (COEXTRUSION)

Experienced Engineering,
Innovative Design.

Duplex Slitter Rewinder

Narrow Web

Single-Face

Dual-Face



TBS



STB 550

STB series

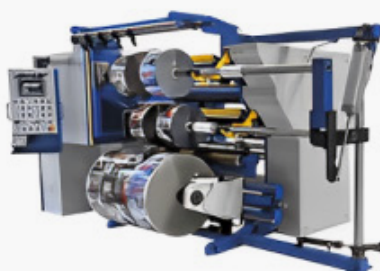


STB 560

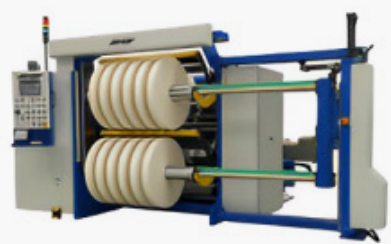
Wide Web



BTS 100



TF 60



STM 60-80 (*)

Duplex Turret Slitter Rewinder

Duplex Turret



BBOX



TCA 64/84C +

Narrow Web Flexo Plate Mounting Machines:



Irismall

Camis make a range of narrow web (up to 600mm) plate mounting machines.

For general label printers the Irismall 600 is able to cope with Shaftless Cyclinders (shells), integral cylinders and also sleeve change.

Wide Web Flexo Plate Mounting Machines:



SleeveMaster AUTO:

The aim of the SleeveMaster Auto is to deliver to the operator a new tool, that is able to deliver automation without the issues often linked to this kind of technology.

Irisleave HD 4.0

The Camis range of sleeve change and cylinder based plate mounters are designed to remove the manual errors that lead to inconsistent registration and print quality.



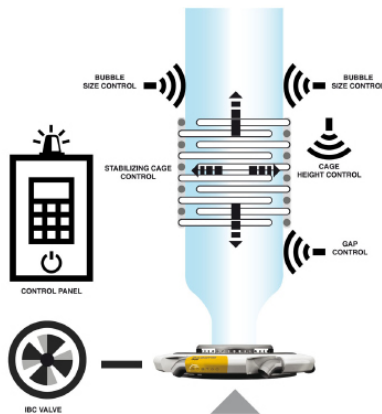
Gravimetric & Feeding Systems



Automatic Gauge Control



IBC & Layflat Control



Loading & Conveying



Supervision & Data Aquisition



WBox



WIT



PRO - FOXY - SNAP



SLY

Reliable and innovative systems for adhesive application and quality control.



Corrugated

Modern flexo folder gluer production



Print Finishing

Perfect solutions for all requirements



End-of-Line

Efficient and resource-saving packaging production



Folding Carton

From the simple folding box to the complex six-pack



Tobacco

Industrial solutions for the tobacco manufacturing industry



Flexible Paper Packaging

Sustainable packaging, beyond plastic



E-Commerce

Solutions for pressure-sensitive adhesive (PSA) application on shipping boxes



Braille

Meeting all the requirements and upcoming regulations in pharma and cosmetics packaging.



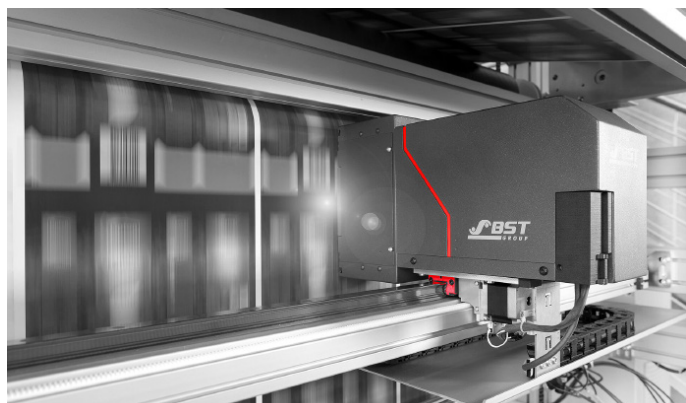


Powerscope 5000

Economic and Compact System
Standard on most Label Presses
Manual Traverse & Keypad Control Standard
Continues Optical Zoom
1 Chip Digital Camera
100x75mm Field Of View
Auto Scan & Position Memory Functions

Options

Motorised Traverse
Touch Screen Control



PROView

The new mid-level web monitoring system
Durable Lighting Unit
Split Screen
High Efficiency
Cost-Effective Service

Software Options

Backlight Strobe
Snapshot Gallery
Lacquer Strobe
Display of Weak Contrasts (Haze Guard)



IPQ Center - View

High End Range System for Complete Inspection Tasks
Photographic Image Quality and Realistic Colour
Virtual Repeat Function with Easy Navigation
Operation & Live Image with Smart Gesture Control

Camera Options

1 Chip Digital Camera 10x Zoom
1 Chip Digital Camera 16x Zoom
3 Chip Digital Camera 16 x Zoom

Software Options

Sample Inspection - Defect Detection
Bar code Inspection
Snapchat Gallery

Various Illumination Options Incl UV & Lacquer
Various Additional Display Sizes Available

100% Defect Detection Systems

Narrow Web



TubeScan Digital Strobe

Economic and Compact System
Complete Repeat Overview
Simple Setup & Operation
Counter for Good, Total and Defects
250m/min Standard 330/430/550/660/
850mm Width

Upgrades Options

TubeScan + Coarse Inspection & Missing Labels
TubeScan ++ Fine Inspection & Colour
Hi Speed & Hi Resolution Options
Repeat Length Monitoring
UV Option
Back Light & Backing Bar Options
Print Report
Dynamic Roll Map
Snapshot Recording
Pdf Validation



TubeScan Eagle View

Cost-efficient combination of 100% print control
& detail view using Matrix camera system
Capture & Display of up to 10 images per second
Synchronization
250/330/370/430/470/550mm Width

Upgrade Options

Digital strobe for web viewing
UV-Illumination
Snapshot recording
Combi backing bar
'clear-to-clear' backing bar
TubeScan ++ Detection module for fine print
TubeScan ++ Print report manager
TubeScan ++ Distance monitoring
TubeScan ++ Dynamic roll map
Touch Monitor + HD monitor



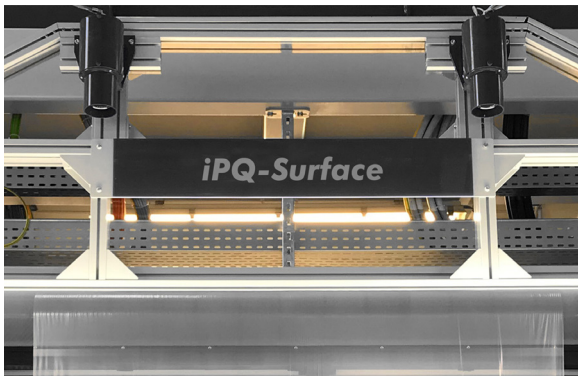
TubeScan Digital Strobe XL

Mid Web 900 - 1700mm
Converting / Packaging
Printing and Slitters
Digital Strobe
Coarse / Medium defects
High-speed matrix camera
Up to 800 m/min
Economical



IPQ Center - Check

- Uninterrupted quality control
- Reliable error detection
- Fast correction of errors
- Increased productivity thanks to automated print inspection
- Targeted error prevention by analysis of production logs
- Reduced waste and complaints
- Increased customer satisfaction
- Production of a higher quality product at a lower cost



IPQ Surface

- Increased productivity, more efficient processes and better goods
- Resource-saving production
- Less effort and a contribution to climate protection
- Noticeably reduced production costs
- Leaner processes and more time for value-adding activities
- Long-term process optimization
- Improved transparency and more control



IPQ Center - Spectral - Inline Spectral Measurement

- Early detection of any colour variations allows fast reaction
- Colour consistency is measured throughout each reel
- Quality proof for your customer
- Protocols as a base for process improvements
- On press measurements as an input for the colour kitchen to further close the colour control loop
- Waste reduction during job make ready



Print Register & Colour Control

FSS15 Ink Fountain Control

Fast printing preparation

- » Simple handling
- » Maximum precision
- » Increased productivity
- » Minimized waste
- » Reduced costs

Registar 20

Up to 20 Units

E.G. Gravure Application

Web Guiding Systems

Controllers

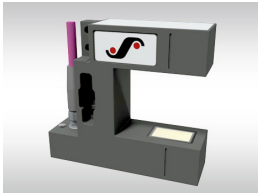


EKR CON 600



ECO: EKR CON 100

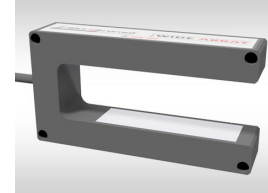
Sensors



Ultrasonic
Edge Sensor



CLS PRO 600
Line & Contrast
Sensor



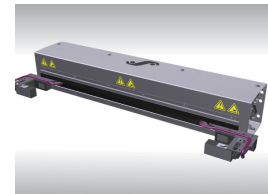
Wide Array
Sensor



Optical
Edge Sensor

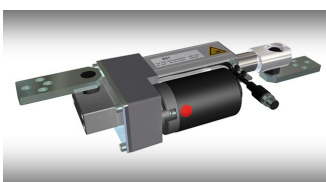


CLS CAM 100

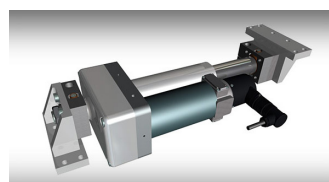


FVG POS 100

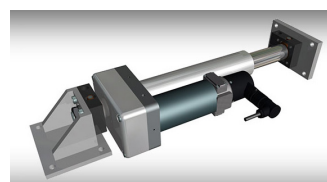
Actuators



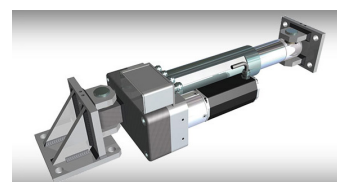
EMS 18



EMS 21



EMS 22



EMS 23

Anti-Static Techniques

Anti-Static Ionising Bars



Measure and Detect Static



Remove and Clean Statically Charged Dust



Static Generators and Charging Systems



Static Control Power Units



Ionised Air Blowers



Corona & Plasma Systems

Corona Discharge



Hot Needle Perforation



Lamination System



Printing System



The Gama Control System Allows Continuous Monitoring Of The Viscosity Thanks To This While Maintaining Very High Print Quality

VIS - G20



VIS - G26



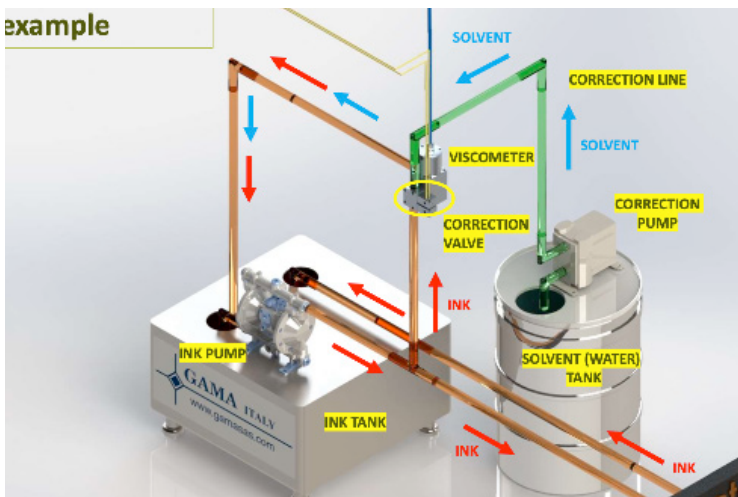
VIS - G29



VIS - G30



example



INKS TREATMENT

Solvent & Water Based Inks Benefits

- Increase the Quality of Printing Process
- Increase Press Speed
- Save Operator Time
- Consistency Ink Formulas
- Save Solvent (or water) & Ink (- 20/30%)

Solvent-Based Ink

What effects the Viscosity?

- Temperature
- Resin system
- Press Speed
- Agitation
- Printing Time

Water-Based Ink

What effects the Viscosity?

- pH
- Temperature
- Resin system
- Press Speed
- Agitation
- Printing Time



Laser-Engraved Anilox Rolls and Sleeves

Linde Advanced Material Technologies
printing@linde.com

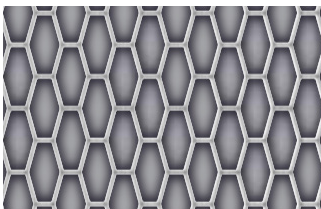
Anilox Rolls & Sleeves

Applications

- Applicators (Coating, Laminating)
- Corrugated (Pre- and Post-Print)
- Envelope
- Flexible Packaging
- Folding Carton
- Liquid Carton/Aseptic Packaging
- Metal Decorating
- Newspaper
- Printed Electronics
- Publications
- Single Use (Tissue, Towel, Cups)
- Tag and Label
- Wallcoverings

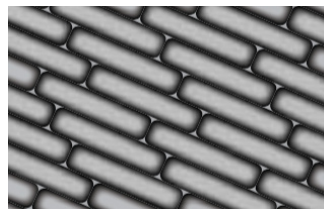


Novaline Series - High-Quality Laser Engraving Options Designed To Let Rolls Run Cleaner Longer



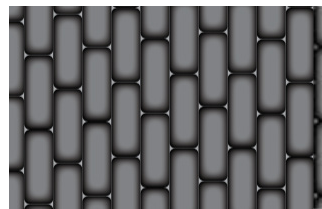
Nova UV Gold

Ideal for UV ink application, including aluminum, film and paper packaging



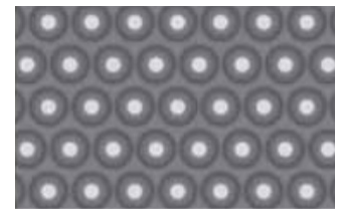
Nova Gold

Developed for high-density flexo printing, particularly high-definition flexible, paper and corrugated packaging



Nova Silver

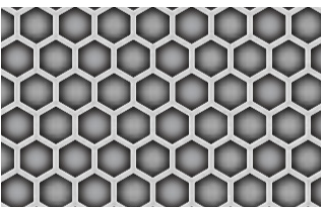
The right choice for solid, process and text high-density printing



Nova ART Gold

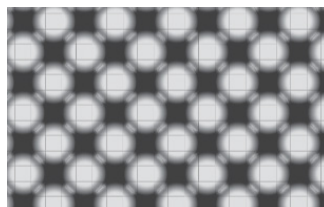
Designed for demanding coating, specialty materials and varnish applications

Proline Series - Exceptional Coverage And Coating Combines With Fast Cleanup For Better Productivity



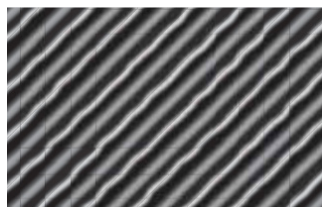
Proline 60

Suppresses moire effects and delivers easy ink transfer and uniform cell structure - this is the most popular pattern



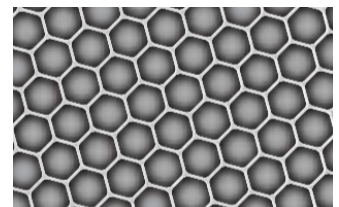
Proline ART

Anilox Reverse Technology - designed for flexo printing, offset coating, gravure and laminating applications



Proline HEL*

Open cell structure offers better ink release for gravure and coater applications



Proline ISF*

Minimizes splash of UV inks

Endorsed by Praxair, Inelme's Contact-Free Laser Technology Delivers Safer, More Efficient Anilox Cleaning.

Inelme is a Spanish company that is present in more than forty countries with hundreds of running machines around the world.



The rollers are inspected, laser cleaned, and certified as per a new anilox. The machine is capable of anilox diameters from **60mm to 250mm** and with a **maximum cleanable facewidth of 2500mm** for a **total roll length of 3500mm** between the journals.



 **Spot The Difference**

Can you guess what was done to achieve this result?





Specialty Extrusion Technologies

Not Only Extrusion Lines But Experience, Formulations, Technical Support and Know How



Blown Film Lines

Medium, High Barrier & Non Barrier applications

MicroLayer technology up to 27 layers

MDO-Like film

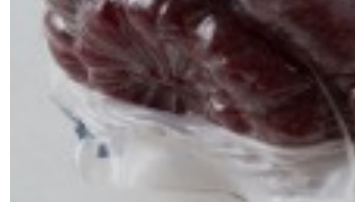


Double Bubble Lines

POF - Shrink Film

For Barrier or Non Barrier Applications

Available up to 7 layers or MicroLayer technology



Multi Bubble

Shrink Bags

Available up to 9 layers or MicroLayer technology



Multi Bubble

Lidding Bags

Available up to 9 layers or MicroLayer technology



Water Quench Lines

Food Packaging & Medical Bags



BOPP Barrier Lines

Bi-Axial Orientation & Annealing Wide Web Solutions



EB Systems For Crosslinking

Material Treatments for Special and Mono Material Applications



Extrusion Coating & Lamination

Flexible Packaging, Liquid Packaging, Single, Tandem & Triple Station

Levante

Levante is the new cutting-edge **extrusion coating machine by Uteco**, powered by **Gap technology**. **Levante** represents the pinnacle of innovation, redefining the standards in the extrusion coating industry.



Max Material Width - 2500 mm
Max Working Speed - 750 mpm
Max Extruder Diameter - 160 mm
Max Chill Roll Diameter - 1100 mm

Machine For Paper Bags



Innovation And Technology, Combined With Easy Use



SERIES

Available in series 300 & Series 500 Models

TECHNOLOGY

Geared or Gearless Train Technology

HANDLES

Handles are available in a **twisted paper** version or in a **flat paper** version



SUN MASTER 541 | **SUN MASTER 350** | **SUN MASTER 540 EVO**
SUN MASTER 545 | **SUN MASTER 355**

MEET OUR TEAM



Sarel Oosthuizen

Owner &
Sales Director



Ryno Oosthuizen

Technical
Director



Darrion Crowie

Business Development
Manager



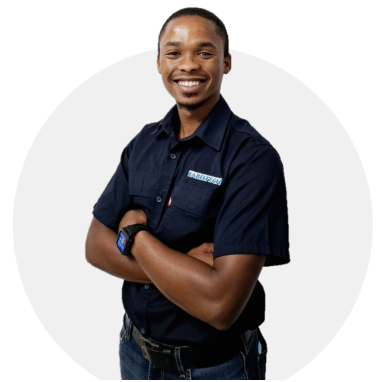
Leon Carstens

Senior Electronics
Technician



Rohan Agenbag

Mechanical
Technician



Keenan Maarlie

Junior
Technician



Elaine September

Branch
Manager



Macky Korah

Senior Electronics
Technician



Larno Julies

Technical
Assistant

CONTACT US

Sarel Oosthuizen

Tel: +27 83 229 9497

Email: sarel@sareltech.com

Ryno Oosthuizen

Tel: +27 73 180 5884

Email: ryno@sareltech.com

Darrion Crowie

Tel: +27 82 552 0158

Email: darrion@sareltech.com

Sareltech

Tel: +27 21 552 9764

Email: sales@sareltech.com

Website: www.sareltech.com

